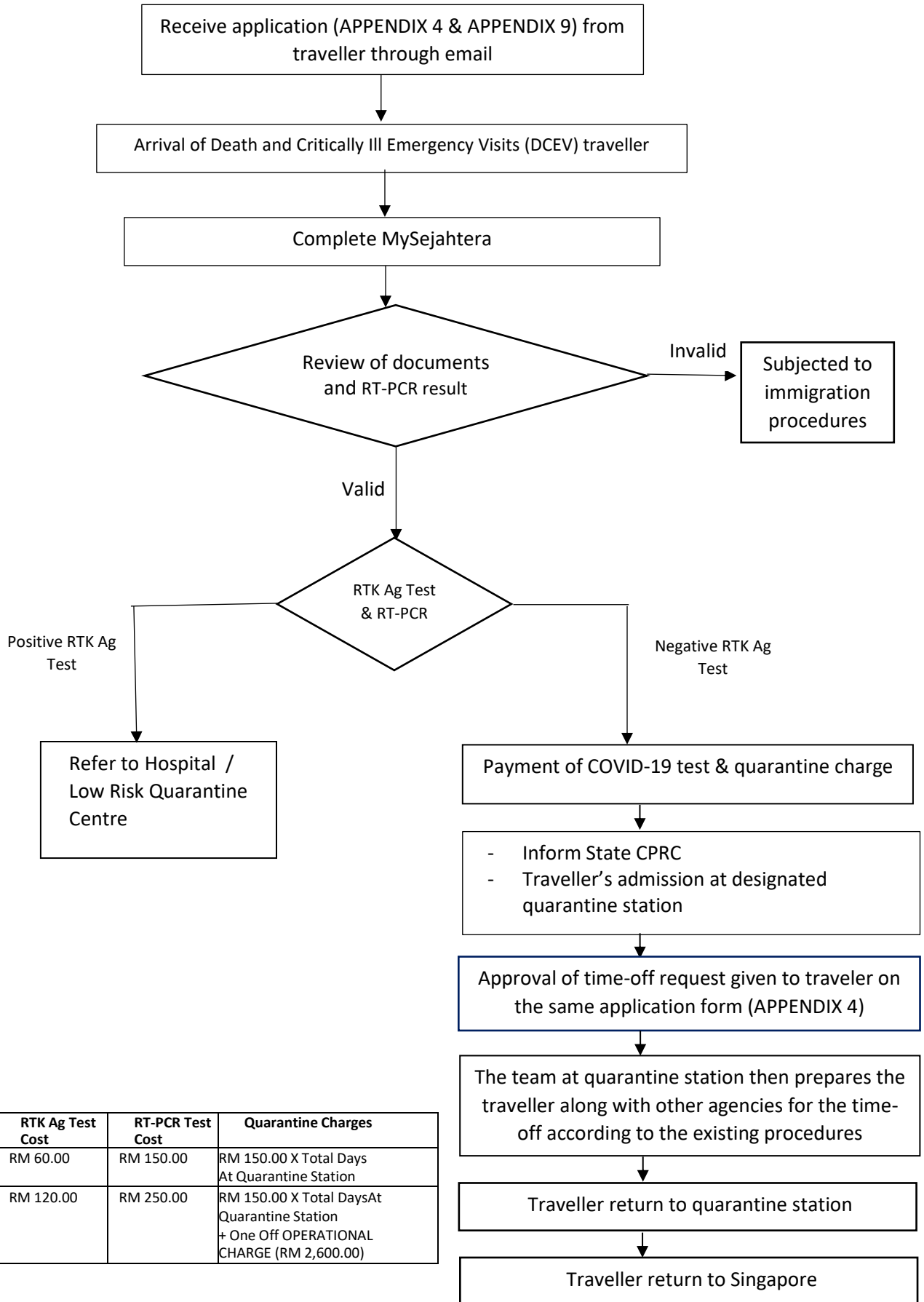


FLOW OF DEATH AND CRITICALLY ILL EMERGENCY VISITS (DCEV) AT KLIA/KLIA2



	RTK Ag Test Cost	RT-PCR Test Cost	Quarantine Charges
Malaysian	RM 60.00	RM 150.00	RM 150.00 X Total Days At Quarantine Station
Non-Malaysian	RM 120.00	RM 250.00	RM 150.00 X Total Days At Quarantine Station + One Off OPERATIONAL CHARGE (RM 2,600.00)